

Errata

Title & Document Type: 1119A Testmobile Operating Note

Manual Part Number: 01119-90910

Revision Date: January 1972

About this Manual

We've added this manual to the Agilent website in an effort to help you support your product. This manual provides the best information we could find. It may be incomplete or contain dated information, and the scan quality may not be ideal. If we find a better copy in the future, we will add it to the Agilent website.

HP References in this Manual

This manual may contain references to HP or Hewlett-Packard. Please note that Hewlett-Packard's former test and measurement, life sciences, and chemical analysis businesses are now part of Agilent Technologies. The HP XXXX referred to in this document is now the Agilent XXXX. For example, model number HP8648A is now model number Agilent 8648A. We have made no changes to this manual copy.

Support for Your Product

Agilent no longer sells or supports this product. You will find any other available product information on the Agilent Test & Measurement website:

www.agilent.com

Search for the model number of this product, and the resulting product page will guide you to any available information. Our service centers may be able to perform calibration if no repair parts are needed, but no other support from Agilent is available.



Agilent Technologies

OPERATING NOTE/JANUARY 1972

1. GENERAL INFORMATION.

2. The HP Model 1119A Testmobile, shown in Figure 1, is a general purpose test mobile which is designed for maximum utility while requiring a minimum of floor space. It provides a quick and easy means of moving an instrument from one test location to another. It also serves as a convenient test or storage stand. Specifications for the HP Model 1119A Testmobile are listed in Table 1.

Table 1. Model 1119A Specifications

Weight	42 lbs (19, 1 kg)
Height	38 inches (965 mm)
Width	19-1/4 inches (489 mm)
Depth	23-1/2 inches (597 mm)

3. The Testmobile is designed for use with standard width HP instruments. The instrument can then be tilted at least 40 degrees above and below horizontal in 10 degree steps. The tilt mechanism is unlocked by pulling out on the detent handle. Releasing the handle will lock the detent automatically.

4. ACCESSORIES.

5. Two accessories are available for the Model 1119A Testmobile. A tiltable shelf, Model 10479A, allows the Testmobile to carry instruments which are smaller than standard width, or by using the adjustable backstop, instruments other than HP. A Plug-In Carrier, Model 10480A, can be mounted in the center of the Testmobile to provide storage space for plug-ins. A built in drawer may be used for probes, cables, connectors, etc.

6. INITIAL INSPECTION.

7. Check the shipping carton for damage immediately after receipt. If it is damaged, ask the carrier's agent to be present when the instrument is unpacked. Inspect the Model 1119A for physical damage such as dents or scratches. If damage is found, refer to Paragraph 8 for recommended claim procedure. Retain the packaging material for possible future use.

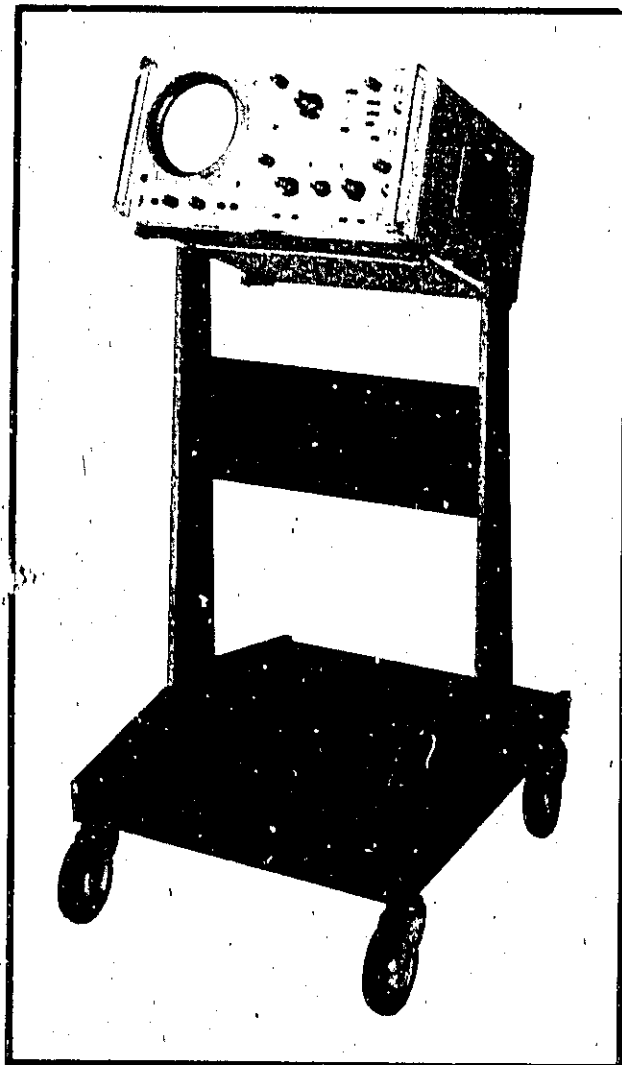


Figure 1. Model 1119A Testmobile

8. CLAIMS.

9. If physical damage is found, notify the carrier and the nearest HP Sales/Service Office immediately. The Sales/Service Office will arrange for repair or replacement without waiting for a claim to be settled with the carrier.

0119-90910

For more information, call the local HP Sales Office or East (201) 285-5000. Midwest (312) 677-0400. South (404) 438-6121. West (213) 877-1282. Or, write: Hewlett-Packard, 1501 Page Mill Road, Palo Alto, California 94304. In Europe, Cable "HEWPACKSA" Tel (022) 41.54.00 or write Hewlett-Packard, 1217 Meyrin-Geneva, Switzerland.

10. REPLACEABLE PARTS.

11. Table 2 lists the replaceable parts for the Model 1119A Testmobile. Some items (e.g., Frame No. 1) list two HP Part Numbers; the olive-gray number applies to the standard part, and the blue-gray part number applies to the Option X95 modification. When ordering parts, address the order to the nearest HP Sales/Service Office and include: HP Model number, HP Part number, and description of item.

Table 2. Replaceable Parts

HP Part No.	Qty.	Description
01119-20504	1	Frame No. 1, olive-gray
01119-20502	1	Frame No. 1, blue-gray (Option X95)
01119-20503	1	Frame No. 2, olive-gray
01119-20501	1	Frame No. 2, blue-gray (Option X95)
01119-00106	1	Front brace, olive-gray
01119-00101	1	Front brace, blue-gray (Option X95)

Table 2. Replaceable Parts (Cont'd)

HP Part No.	Qty.	Description
01119-00108	1	Rear brace, olive-gray
01119-00103	1	Rear brace, blue-gray (Option X95)
01119-00107	1	Deck, olive-gray
01119-00102	1	Deck, blue-gray (Option X95)
01119-24706	2	Trunnion, olive-gray
01119-24701	2	Trunnion, blue-gray (Option X95)
1490-0732	4	Caster
1480-0110	2	Pivot pin (1/8 x 1/2)
7200-0329	1	Detent handle
01119-22501	1	Detent wheel
1460-0295	1	Compression spring
01119-25201	1	Spring housing
01119-26101	1	Detent pin
1480-0003	1	Retaining pin (3/32 x 1)
2680-0092	16	Screw (10-24 x 5/16)
2550-0028	4	Screw (8-32 x 9/16)

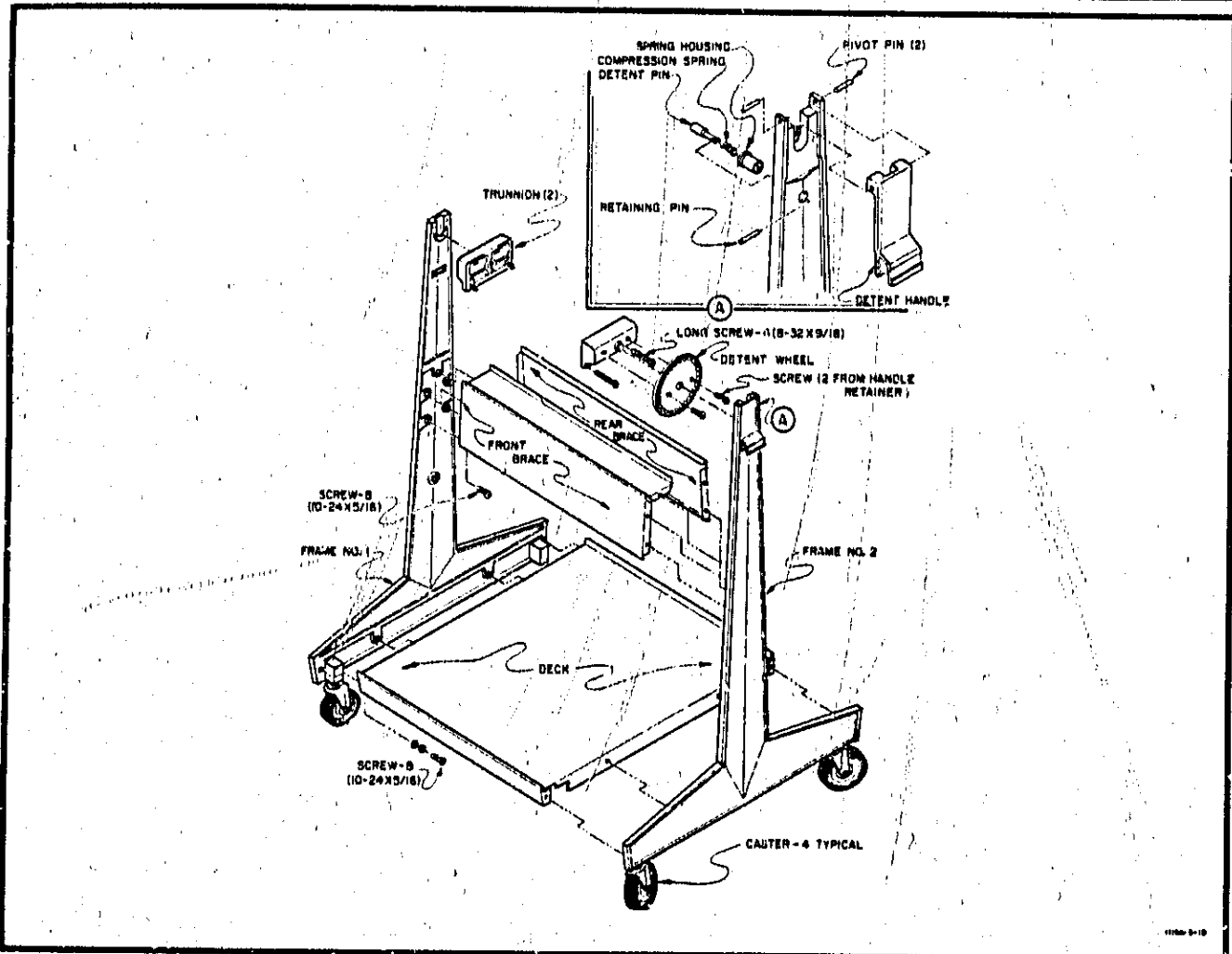


Figure 2. Testmobile Assembly